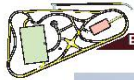




# Liniger Emergency Vehicle Operation Center at Douglas County 8500 Moore Rd. Littleton, Colorado 80125 USA

## Facility Safety Plan & User Rules Effective: January 29, 2018



Emergency Vehicle Operation Center

*EVOC Looking North  
(Birds-eye View)*



 DOUGLAS COUNTY  
COLORADO

Managed By:



**HIGHLANDS RANCH  
LAW ENFORCEMENT  
TRAINING FOUNDATION**

**[HRLETF.org](http://HRLETF.org)**

# Table of Contents

<u>Page</u>	<u>Subject</u>
2	Contacts & Notification Information
3	Driver Training Facility Details
4	Scheduling Cancellations Damages & Security Deposits Approved Private Event Users User Fees
5	Hours of Operation Safety Plan & Requirements
6	Serious Injury or Illness First Aid & Emergency Equipment Facility Safety & Training Equipment
7-9	Safety & Operational Rules

---

## Scheduling, Contact & Notifications

Arlan Kluth, EVOC Facility Director  
Office (303) 814-7097, Cell (720) 215-9810  
[Akluth@dcsheriff.net](mailto:Akluth@dcsheriff.net)  
[evoc@dcsheriff.net](mailto:evoc@dcsheriff.net)

---

## Other HRLETF Representatives

Dave McCaslin, HRLETF Facility Director  
Office (720) 344-4617, Emergency Cell (303) 210-9027  
[DMccaslin@CO.Arapahoe.co.us](mailto:DMccaslin@CO.Arapahoe.co.us)

Audra Garton-Norvell, Douglas County Sheriff's Office  
(303) 660-7593, FAX (303) 814-8790  
[agarton@dcsheriff.net](mailto:agarton@dcsheriff.net)  
[evoc@dcsheriff.net](mailto:evoc@dcsheriff.net)

---

## Emergency Services

South Metro Fire Protection District. Dial 911

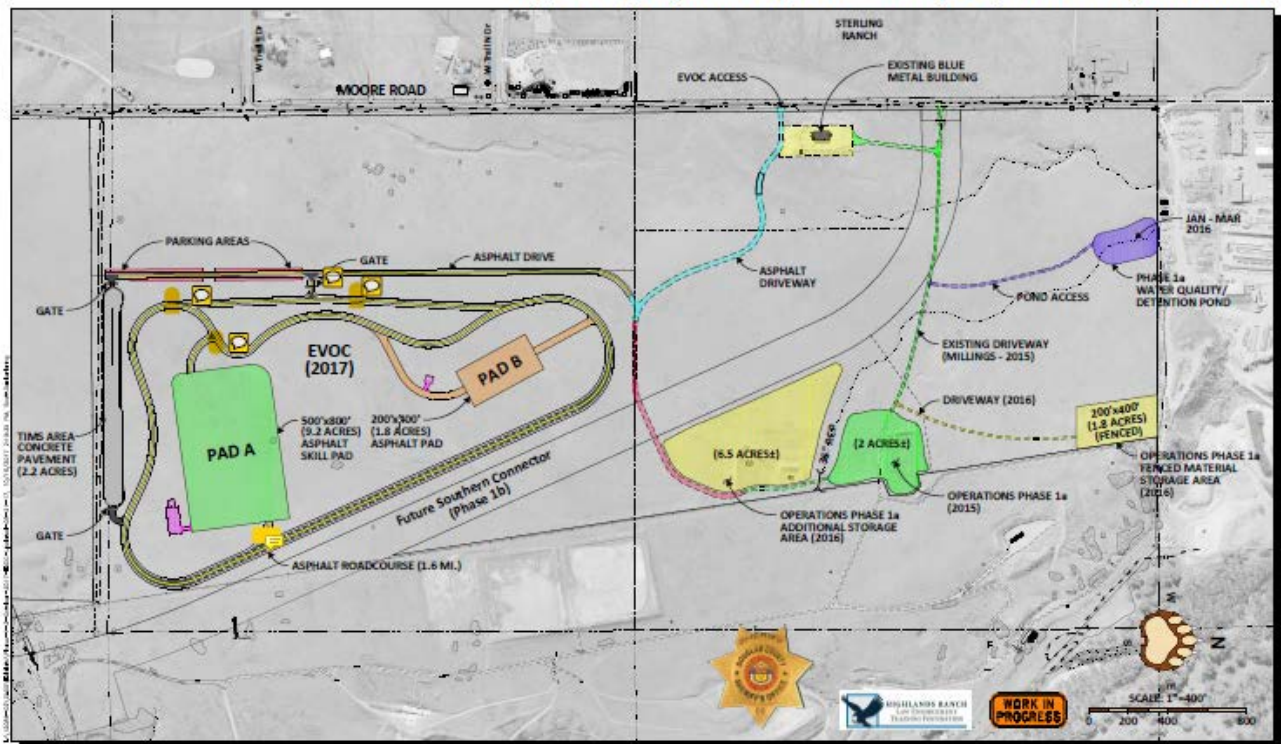
Douglas County Sheriff's Office  
Dial 911. Non-emergency 303-660-7500

## Driver Training Facility Details:

<b>Perimeter Driving Course</b>		1.6 miles asphalt paved with .5 mile 4 lanes for PIT, etc.
<b>Pad A</b>	Cones onsite	Skills Pad: 9.2 acres asphalt paved
<b>Pad B</b>	Cones onsite	Skills Pad: 1.8 acres asphalt paved
<b>TIMs Area</b>		2.2 acres concrete pad
<b>Student Parking</b>		At south end of Liniger Way
<b>Restrooms</b>		Port-o-lets at Student Parking, Skill Pad-A, & Skill Pad-B
<b>GPS Coordinates</b>	Entrance at 8500 Moore Rd.	N 39 48 7986 W 105 02 5956

### Douglas County Moore Road Parcel

#### Liniger Emergency Vehicle Operation Center (EVOC) Phase 1 & 2 (October 2017)



**Welcome:** Welcome to the Liniger Emergency Vehicle Operation Center (EVOC), owned by Douglas County and managed by the Highlands Ranch Law Enforcement Training Foundation [www.HRLETF.org](http://www.HRLETF.org).

The EVOC is a public-safety driver training facility—it is not designed or intended for extreme driving or racing. With Mt. Evans set in the background, and at 5900 feet above sea level, it offers a great place to teach advanced decision making; safe pursuit driving and pursuit termination; communication while driving; low speed technical driving skills; day and night driving; inclement weather skills; vehicle dynamics and limitations; law enforcement motorcycle certifications; crash investigation training; the most recent approaches to traffic incident management (TIMS); and local teen and senior driver safety program(s).

**Scheduling:** EVOC usage must be specifically scheduled. Users may only use the part(s) of the EVOC for which they are specifically scheduled. Users are required to be at the facility at least 30 minutes before their scheduled start time to complete a safety check before training begins. Users may forfeit scheduled use of the facility if they do not arrive by the noted times. Agencies that want to use a forfeited training area must contact the HRLETF director before doing so.

Check scheduling availability at [www.HRLETF.org/evoc/](http://www.HRLETF.org/evoc/). To schedule instructional time, the user/agency must email or call the EVOC facility director (noted above).

**Cancellations:** Government users and approved private users who cancel a scheduled reservation(s) with less than 30 days written notice, to the EVOC facility director, may be subject to a non-refundable cancellation fee equal to 25% of the cost of their initial scheduled reservation (except in cases of severe weather that reasonably compel cancellation). All cancellations shall be in writing and effective upon receipt by the EVOC facility director.

If Douglas County or the HRLETF cancels a scheduled reservation for any unforeseen reason or act of God, then all monies paid by the user shall be refunded. Any liability of Douglas County or the HRLETF shall be limited to the fees paid by the user.

**Damages & Security Deposits:** Users will be held responsible for all damages and associated costs of any clean up and repair to the EVOC, its property, and equipment. All costs deemed necessary and incurred by Douglas County or the HRLETF for replacement and/or repairs caused by users will be billed to the user. Payment for cleanup and damages must be made within thirty (30) days after receipt of billing.

EVOC user fees are established based on established scheduling periods, as noted below. HRLETF public-safety agency members receive a discounted rate. User fees for public-safety agencies are listed at [www.HRLETF.org/evoc/](http://www.HRLETF.org/evoc/). User fees for other special events are established separately and available upon request by contacting the EVOC facility director.

**Approved Private Event Users:** Approved private users will be required to pay security deposit equal to 25% of their scheduled reservation fee. The deposit will be refunded if the facility is left in a clean state and there are no damages. The deposit shall be due and payable a minimum of two (2) weeks prior to the scheduled use. The deposit will be refunded, or applied to the user's reservation fee, if the facility and property are left in a clean state and there are no damages. The deposit shall be due and payable a minimum of two (2) weeks prior to commencement of the event.

Approved private users must provide all hospitality, security, clean-up crew and other personnel necessary to conduct the approved activities and to leave the facility in a clean and orderly condition, unless otherwise agreed to in writing by the EVOC facility director.

**User Fees:** The EVOC fee schedule is posted on our website at [www.HRLETF.org/evoc/](http://www.HRLETF.org/evoc/). Any question regarding fees should be directed to the EVOC Facility Director. The user can make payment electronically (purchase card or credit card) on the <http://hrletf.org/evoc/payment/> website. Or a check made payable to the **Douglas County Treasurer** can be mailed to: Douglas County Sheriff's Office, Attn: Diane Romero, Budget and Logistics, 4000 Justice Way, Castle Rock, CO 80109.

Once the user/agency has completed scheduling, payment, and the required waiver (noted below), the EVOC facility director will provide the user/agency with the combination code for the entry gates/equipment trailer.

## **Hours of Operation:**

**Monday through Friday – Opens at 08:00 hours; Closes at 21:00 hours**

### **Scheduling periods in 6 hour increments:**

1. 08:00 hours till 14:00 hours
2. 14:30 hours till 20:30 hours

**Saturday and Sunday – Opens at 08:00 hours; closes at 18:00 hours**

### **Scheduling periods in 5 hour increments:**

1. 08:00 hours- 13:00 hours
2. 13:00 hours- 18:00 hours

**Safety Plan & Requirements:** Before the start of any training, the agency conducting the training will designate a **Lead Instructor** who will:

- Ensure all participating instructors and students have a working knowledge of this safety plan and rules.
- Ensure students park personal vehicles in the designated parking area just west of the entrance to the EVOC outer loop. The only exceptions are if a personal vehicle(s) is authorized as part of an approved private teen/senior driver training class or approved special event.
- Ensure there is adequate telephone communication for emergency response on site, or assign two people to respond to a telephone to call 911 in the event of an emergency
- Ensure there is cell phone or agency radio communication between instructors to coordinate training activities and ensure safety. DCSO instructors and users should use radio channel SA1, SA2, or SA3 during EVOC training.
- Appoint at least one person as a Safety Officer, with the responsibility for safety oversight, emergency notifications, and other tasks that ensure compliance to this plan.
- Appoint at least two persons to respond to the entry area to “guide in” emergency responders in the event of an emergency.
- Ensure that a first aid kit is readily available. The EVOC may have some basic kits in predetermined locations; however the user agency is responsible for having a kit available that meets their own standards.
- Agency instructors are encouraged to share training cone configurations and driver training curriculum whenever possible and permissible, to help ensure training consistency and facility safety.

**The EVOC has basic emergency first aid and other safety/training equipment available during operational hours only (fire extinguishers, AED, first-aid kit);** however it is encouraged that each agency be responsible for providing their own equipment for which they were trained.

It is not our intent to interfere in an agency’s training, standard operating procedures, or policies, unless it affects the effectiveness of this safety plan or the overall safety of the EVOC. It is our intent to keep the EVOC as safe as possible for everyone.

**Each agency and student must make every reasonable effort to comply with the intent of this safety plan.**

We may record the actions and movement of personnel, vehicles and any use of facilities via security camera locations. These cameras are for everyone’s safety and security.

**Serious Injury or Illness:** In the event of an injury or illness to anyone during any training:

- The **Lead Instructor, any designated Instructor, or the facility director** will ensure first aid is started.
- **The Lead Instructor** will ensure that emergency medical personnel are notified. **The use of 911 is the fastest and best way to call for help.**
- **Lead Instructor** will ensure that designated persons proceed immediately to an area near the incident and to the EVOC entrance to assist emergency responders in locating the scene.
- **Lead Instructor**, or their designee, can request an emergency medical helicopter. **If a helicopter is requested, please notify the responding fire/medical responders that it has been requested.**
- The **Lead Instructor** will notify the EVOC facility director as soon as practical.
- In the event of any training-related death, all training shall immediately stop. Training may resume only after the **Lead instructor/user** advises and the EVOC facility director and the HRLETF has ensured that the program is operating in compliance with facility rules.
- In the event of any training-related death to any student, instructor or bystander during a Colorado P.O.S.T. academy or driving instructor certification course, all training shall immediately stop. Once the scene is safe, the **Lead Instructor** shall notify the Colorado P.O.S.T. as soon as practical. Training shall not resume until Colorado P.O.S.T. has completed their investigation.

**First Aid & Emergency Equipment:**

**Latitude- N 39 48 2358 / Longitude- W 105 02 1231**

<b>Capabilities</b>	<b>Yes/No</b>	<b>Note</b>
1st aid kit	Yes	<b>Skill Pad-A (inside storage trailer)</b>
Telephone	No	
Fire extinguisher	Yes	<b>Skill Pad-A (inside storage trailer) Skill Pad-B (inside shade structure)</b>
(AED) Automated External Defibrillator	Yes	<b>Skill Pad-A (inside storage trailer)</b>

**Facility Safety & Training Equipment** EVOC safety and training resources must be put away completely and properly. Damage to any equipment or the facility must be reported promptly to the EVOC facility director as required in these rules. This equipment is available for government users only, unless approved by the EVOC facility director.

<b><u>Equipment</u></b>	<b><u>Location - Note</u></b>
Cones and Cone Trailers (requires a 2” trailer hitch ball)	<b>Skill Pad-A Skill Pad-B (under shade structure)</b>
Portable Air Compressor & Generator	<b>Skill Pad-A (inside storage trailer)</b>
Floor Jack & tire changing tools	<b>Skill Pad-A (inside storage trailer)</b>
Traffic lane-change light system	<b>Skill Pad-A (inside storage fence)</b>
Portable Radar Speed Sign	<b>Skill Pad-A</b>

Several standard cone layouts are marked on the pavement. Cones are stored on cone trailers. Users must supply their own vehicle with a 2” hitch ball in order to move the cone trailers around the EVOC. Use of this or other EVOC equipment and tools shall only be used by authorized and trained personnel.

**The EVOC storage trailer also houses a Gator ATV, which is only available to Douglas County and the HRLETF.**

**\*\*\* IMPORTANT Safety & Operational Rules \*\*\*** All Users shall adhere to these rules and protocols, Failure to comply may result in the suspension or termination of EVOC use.

1. Personal use of the facility is PROHIBITED. Any prohibited uses of the facility may be excepted only by the express written authorization from the DCSO or EVOC facility director.
2. All instructors must view the facility orientation video annually, before using the EVOC, which is available at [www.HRLETF.org/evoc/](http://www.HRLETF.org/evoc/).
3. Users shall perform a safety briefing covering facility safety rules and procedures before use of any program area or EVOC equipment.
4. The EVOC will accommodate most law enforcement vehicles including sedans, SUV's, pickup trucks, PIT cars, motorcycles, and bicycles. It will also accommodate some larger vehicles, weighing less than 35,000 pounds GVWR, such as fire agency vehicles, school buses, and unloaded commercial vehicles.
5. Any vehicle with a GVWR greater than 35,000 pounds must be approved by the EVOC facility director.
6. Prior to using the EVOC, government-agency users must agree to the conditions and provide a signed *EVOC Intergovernmental Terms of Use Agreement*. This is available at [www.HRLETF.org/evoc/](http://www.HRLETF.org/evoc/). Completed and signed agreements may be scanned and emailed to [EVOC@dcsheriff.net](mailto:EVOC@dcsheriff.net).
7. Prior to using the facility, every non-government user that is authorized to use the EVOC must first agree to the conditions and provide a signed *EVOC Individual Release, Indemnity, and Assumption of Risk Agreement*. This included compliance with all insurance requirements as stated in the agreement. This is available at [www.HRLETF.org/evoc/](http://www.HRLETF.org/evoc/). Completed and signed agreements may be scanned and emailed to [EVOC@dcsheriff.net](mailto:EVOC@dcsheriff.net).
8. Any user that accesses the EVOC after hours of operation must first notify the Douglas County Sheriff's Office Dispatch Center at 303-660-7500.
9. Parking will be in designated parking area(s) only. No parking on any access road at any time.
10. Personal vehicles are not allowed on the EVOC training roadways or skill pads, unless specifically permitted by the user's Lead Instructor. Any personal vehicle permitted by the Lead Instructor shall not be used as a training vehicle on the EVOC.
11. Speed limits on entry roads must be adhered to at all times.
12. Safe driving practices will be adhered to at all times.
13. The inner EVOC roadway that connects Pad A and Pad B is a required slow area, with a maximum speed limit of 35 MPH.
14. An adequate number of instructors must be present at all times during any training.
15. No student shall drive on the EVOC, or participate in any training activity, without a driving instructor present at the EVOC.
16. Once training begins, and during the entire duration of any training, Gate #2 at the main entrance to the EVOC Outer Perimeter Roadway, must remain closed to prevent accidents and injury.
17. Noise is a significant concern to our neighbors. Every effort shall be made to prevent excessive noise. Open exhaust systems are prohibited. The primary maximum exhaust noise shall be a sound pressure level of 100dB "A" frequency weighted (dBA) measured on the fast response setting at 50 feet (+/- 2 feet) from the edge of the track pavement, and/or artificial markers indicating track edge.
18. The EVOC does not allow vehicles with excessively loud or altered exhaust systems unless specifically authorized by the EVOC facility director.

19. The use of external emergency vehicle lighting is fine, but, the use of external sirens, air horns, and other loud sound equipment is prohibited.
20. Before beginning any training, and again after meal breaks, the Lead Instructor is responsible to ensure that the EVOC is checked to ensure no unexpected people or animals are present.
21. Only one agency is permitted to train on the EVOC at any one time. The singular agency using the EVOC is permitted to simultaneously use all paved parts of the facility (Outer Perimeter Roadway, Skill Pad-A, and Skill Pad-B) provided they have instructors present at all areas being used, who have phone or radio contact with each other, and who ensure there is no danger presented to each separate training area.
22. In the event of a crash during training, all training in the area will stop. Notify a driving instructor as soon as possible.
23. In the event of a vehicle crash that results in any injury and/or facility property damage, the Lead Instructor shall notify the Douglas County Sheriff's Office so a crash investigation/report can be completed. In an emergency dial 911; if a non-emergency, call 303-660-7500.
24. Notify the EVOC facility director in the case of any injury, property damage, or vehicle crash that occurs on site, however slight. This includes damage to roadway shoulders, fencing or grasses.
25. Users are responsible to ensure the safe condition of their vehicles used in training.
26. The EVOC does not provide training vehicles—those are the responsibility of the user agency.
27. Users must also provide their own agency-approved driving instructors.
28. Users may not permanently paint markings on the training roadway or skill pads. Chalk or roadway crayon marking are permitted.
29. Autocross events can only mark road course with flour.
30. All areas and facilities are designated non-smoking.
31. No burning anywhere on site. If any a fire occurs, immediately call fire services, regardless of whether the agency/user was able to extinguish the fire.
32. The EVOC may not be used in any manner inconsistent with its designed and designated purposes.
33. There will be no possession of a firearm during any tactical training or scenario. Those participating in any tactical scenario or force-on force training shall secure their firearms and other weapons in a secure area prior to any participating in such training. The Lead Instructor is responsible for ensuring compliance.
34. All Instructors will be responsible for assuring that all firearms are managed in safe manner. This is not a firearms site and there will be no discharge of any firearm or use of any explosives or hazardous materials on this site. Weapons will not be left unattended or unsecured. *Remember, we use inmate labor.*
35. No student or cadet who is attending a Colorado P.O.S.T. Basic or Refresher Academy will be in personal possession of a firearm during any training while on the EVOC site.
36. Under no circumstances will anyone other than Colorado recognized law enforcement personnel be in possession of a firearm on the EVOC site.
37. Loading or unloading of any firearm will only be done within the designated area.
38. Any discharge of a firearm whether intentional or unintentional will require a written report.
39. The use of this facility by anyone other than designated agencies/users must have prior approval of the EVOC facility director, and have signed all necessary waivers.
40. Users shall not share gate or storage trailer codes with anyone not authorized to use the EVOC.
41. Pursuit Immobilization Technique (PIT) training shall be performed on the four-lane area of the EVOC perimeter roadway, or Skill Pad- A.



42. Use of the unimproved areas between designated training areas is strictly prohibited without approval.
43. Any person “on foot” shall be extremely aware of all activities and not place themselves in danger.
44. No equipment may be used by an individual if he/she has not been trained and authorized by their agency in the operation of that equipment.
45. Users may not alter the facility or do any plumbing, electrical, telecommunications, carpentry or mechanical work on any the part of the facility without prior written approval of EVOC facility director.
46. Absolutely no alcoholic beverages will be allowed on the facility, unless advance written approval is granted by the EVOC facility director or DCSO. Approval may be granted only after all facilities are closed and an authorized scheduled social event takes place.
47. No pets allowed on or adjacent to training areas and pets are discouraged in all other areas of this facility. Under no circumstances will pets be allowed off a leash without approval. This does not apply to “agency working dogs” under approval by the user agency.
48. There is no current user equipment storage or vehicle storage at the site.
49. Gasoline is not currently available on site, but this may change in the future. When fuel does become available on site, it will only be available to government entities, and only upon prior contractual agreement with DC Government.
50. Users may not, under any circumstances, sub-lease any part of the EVOC, equipment or materials owned by Douglas County or the HRLETF, without the prior written approval of the EVOC facility director.
51. All equipment and cones will also be returned to proper place after use. Cones shall be stored on the cone trailers. The cone trailers and cones may not be removed from the EVOC site.
52. Missing equipment or extensive clean up required by our staff may be charged to users over and above rental fees.
53. Remove all materials and trash from the training areas and place it in the appropriate containers when finished or at end of each day’s use.
54. Lead Instructor/Primary User Representative must ensure the EVOC entry gate (Gate #2) and the site entry gate from Moore Rd. (Gate #1) is closed and locked upon leaving the facility.
55. The Highlands Ranch Law Enforcement Training Foundation management, their designee or DCSO will provide enforcement of these regulations.

I/We \_\_\_\_\_ (the “User”) agree to follow the aforementioned EVOC Safety Plan and User Rules of the Douglas County Emergency Vehicle Operation Course (EVOC) located at 8500 Moore Road in Douglas County, Colorado. I/We agree to use the EVOC from DATE: \_\_\_\_\_ and TIME: \_\_\_\_\_ to DATE: \_\_\_\_\_ and TIME: \_\_\_\_\_.

**Executed this \_\_\_\_\_ day of \_\_\_\_\_, 20\_\_\_\_\_.**

BY: \_\_\_\_\_ PRINTED NAME: \_\_\_\_\_  
 (Insert Name & Position of Signatory)

Date: \_\_\_\_\_

Agreement accepted by Douglas County:

By: \_\_\_\_\_ Date: \_\_\_\_\_